

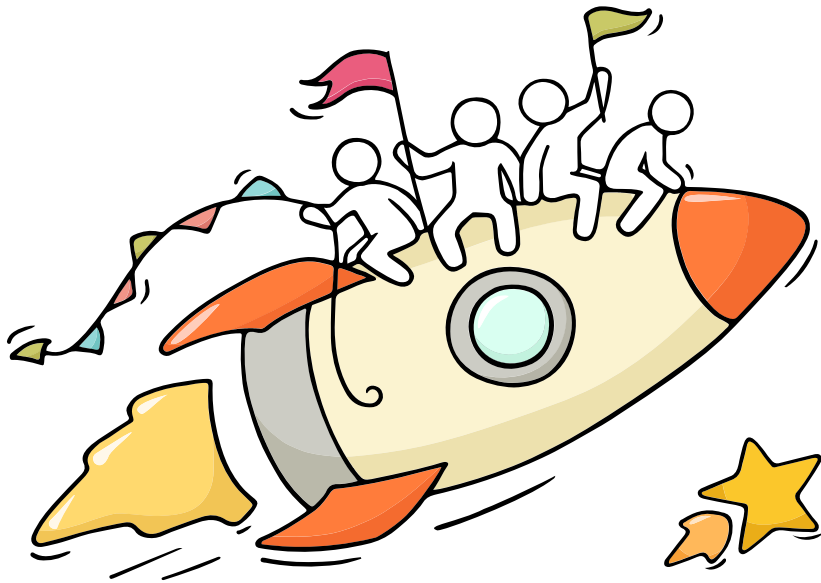
Welcome Back!

Briefing Slides for Release of 2023 N-Level Results

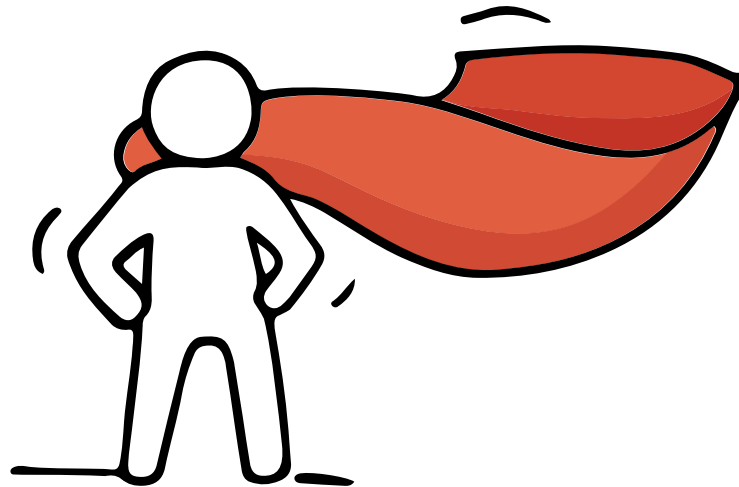


Dear students,

You have worked hard to reach this stage. Let's celebrate your efforts!



Remember that while **everyone's educational journey is different, we can each have a fulfilling outcome!**



Thinking about Your Next Step?

Consider these questions!

Where do I want to go?

Who am I?



How Do
I Get There?

Resources to help you make informed decisions



MySkillsFuture Student Portal

A one-stop portal that empowers you to embark on a journey of self-discovery and make informed education and career choices.

Use the information and tools to explore various education and career pathways and take charge of your future.

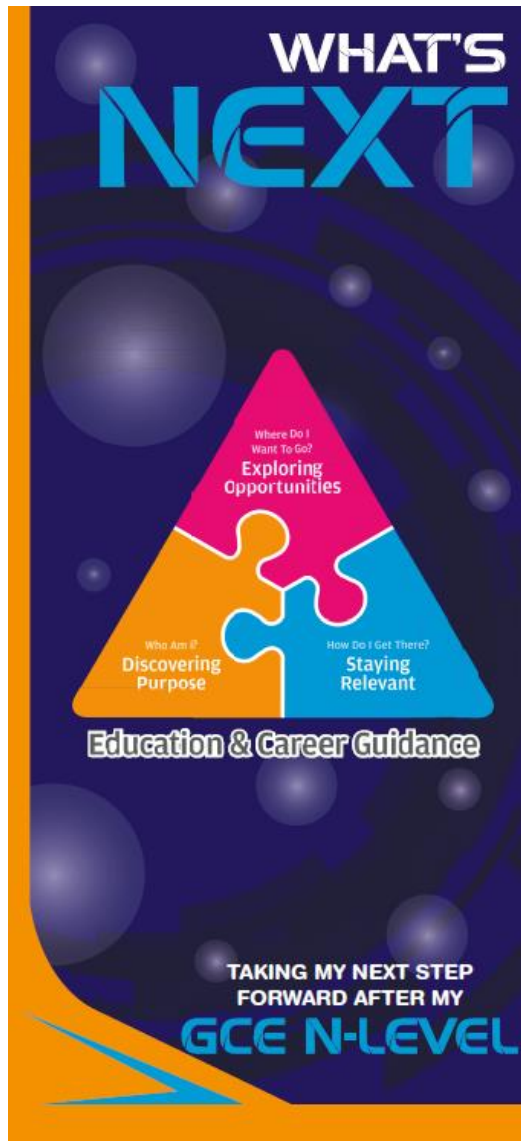
Where can we find more information?



<https://go.gov.sg/mySFsec>



Resources to help you make informed decisions



<https://go.gov.sg/whats-next-nlevel>

<https://go.gov.sg/whats-next-nlevel>

Resources to help you make informed decisions

Post-Secondary Education

Learn more about the admissions exercises and programmes



<https://moe.gov.sg/post-secondary/admissions>

Learn more about the post-secondary education institutions



<https://moe.gov.sg/post-secondary/overview>

Resources to help you make informed decisions

Explore different jobs and industries with On My Way (OMW). Find out if your career goal and educational pathway match your interests, values and ambitions. <https://www.nyc.gov.sg/omw/home>



KNOW IT ALL

provides consolidated information about different jobs and industries - key responsibilities, skills, career paths and more!



A Day in the Life of a Food Technologist

DAY IN THE LIFE

takes you into the lives of different professionals and give you a glimpse of their jobs and what it entails through the medium of videos.



TASTER PROGRAMMES

are micro-experiences of different job roles that allow you to get a taste of working life and help you decide what to study to achieve your career aspirations!



Concerned about your next steps?

Stop

- Calm yourself down. Take a few deep breaths.

Think

- Think through the different options that are available for you. Keep things in perspective.
- Remember that the N-Level is one part of your life journey and not the destination.

Do

- Approach a trusted adult and seek his/her help. Have a conversation with this person about what would be best for you.
- Make a decision and take action based on your options.

When you receive your results, you may experience a range of emotions.

Managing these emotions well will allow you to stay calm and make rational decisions.

Reaching out for help is a sign of strength, not weakness.

If you have any questions about your options or are not coping well, do reach out to someone you trust and speak with them. It could be a parent/guardian, teacher, ECG Counsellor, School Counsellor or a friend that you can talk to.



Support is readily available for you.

Reach out to an ECG Counsellor!

*Who can we
go to for
ECG advice?*

Make an appointment to speak with your
ECG Counsellor in school.

<http://go.gov.sg/smssecg><http://go.gov.sg/smssecg>

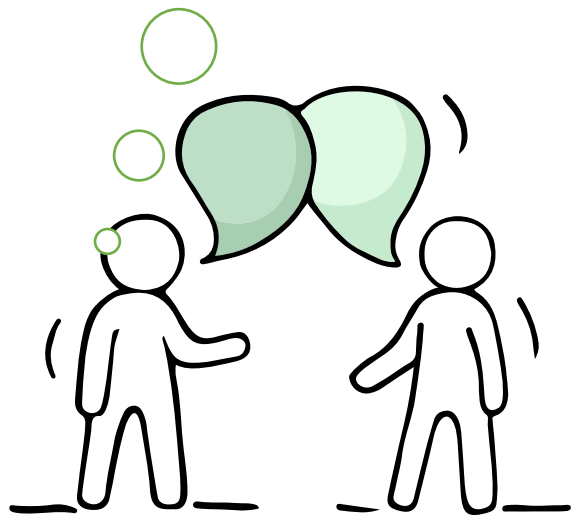
OR

Make an ECG counselling appointment via the
ECG Centre @ MOE (Grange Road) at

<https://go.gov.sg/moe-ecg-centre>



<http://go.gov.sg/smssecg>



<https://go.gov.sg/moe-ecg-centre>

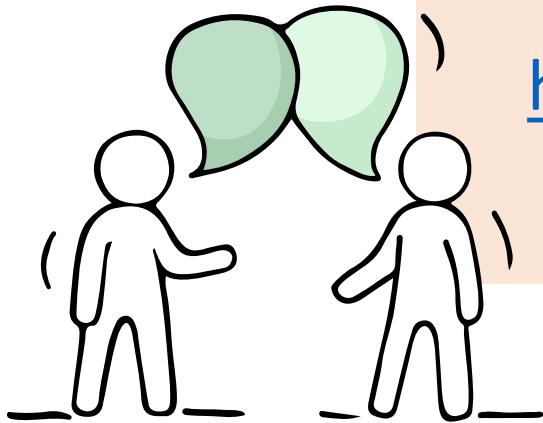
Support is readily available for you.

Reach out to an ECG Counsellor!

If you are applying for ITE courses with interview, please make appointment to see Ms Ang Hui Min within the next few days

Make an appointment to speak with your ECG Counsellor in school.

<http://go.gov.sg/smssecg>



<https://go.gov.sg/smssecg>

Keep a lookout for some of these signs in your peers or in yourself

How can we support one another?



D

Deliberately avoiding others

I

Increased irritability, restlessness, agitation, stress and anxiety

S

Sending or posting moody messages on social media

T

Talking about death or dying

R

Reacting differently or gradually losing interest in things they used to like

E

Eating more than usual or having a much reduced appetite

S

Sleep pattern changes with difficulty falling asleep or oversleeping

S

Slowing down of energy levels

If you notice any of these signs in yourself or your friends,
have a chat with your school counsellor or teacher
Or contact SOS 24-hour hotline at **1-767** or **1800-221-4444**

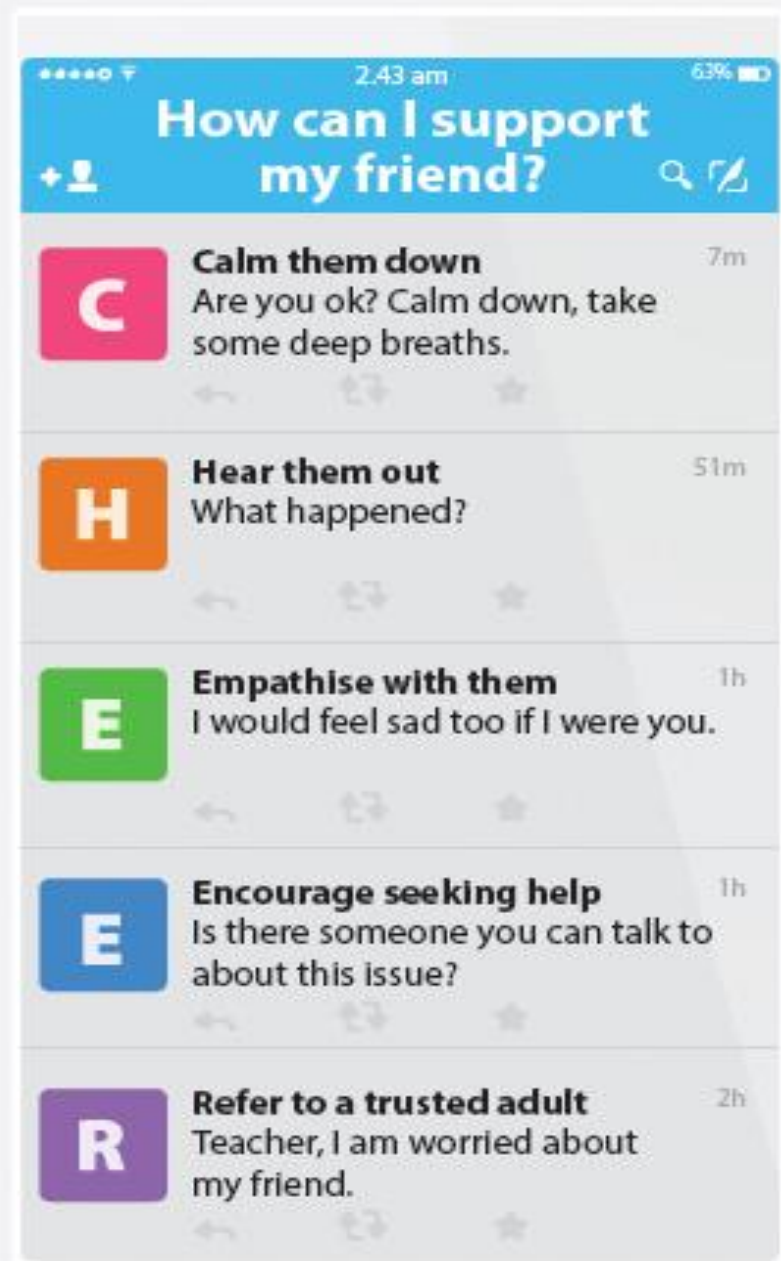


Supporting Your Friend

We may each experience different emotions upon receiving the results. You can share your friends' joy by congratulating them or give words of encouragement to friends who may be disappointed with their results.



Keep a lookout for your friends in distress. You can support them in the following ways:



Support is readily available for you.

There are other hotlines and chats available if you are more comfortable seeking help using these platforms. Scan the QR code below for a helpful resource.



SOS provides round-the-clock emotional support for those in distress, thinking of suicide or affected by suicide.

Call: **1767**
(24-hour helpline)

Whatsapp: **9151 1767**
(24-hour Care Text)

TOUCHline is a helpline to provide youths with emotional support and practical advice.

Call: **1800-377 2252**

*Monday- Friday (Excluding Public Holidays):
9am – 6pm*

Community Health Assessment Team

(CHAT) provides personalised and confidential mental health checks and consultation for youths. To speak with a youth support worker, you can:

Visit: **CHAT Hub at *SCAPE, #05-05**

Call: **6493 6500/ 6501**

Email: **CHAT@mentalhealth.sg**

Carey is an online platform by Care Corner that provides free mental health check-ins with mental health professionals. Find out more at:
<https://carey.carecorner.org.sg/>

mindline.sg is an online platform that provides tools, tips and resources to help you manage your health and well-being. Find out more at:

www.mindline.sg



eC2 is an e-Counselling Centre where you can talk to a trained counsellor about the issues you are facing, right where you are.

Chat with a counsellor at:

www.ec2.sg

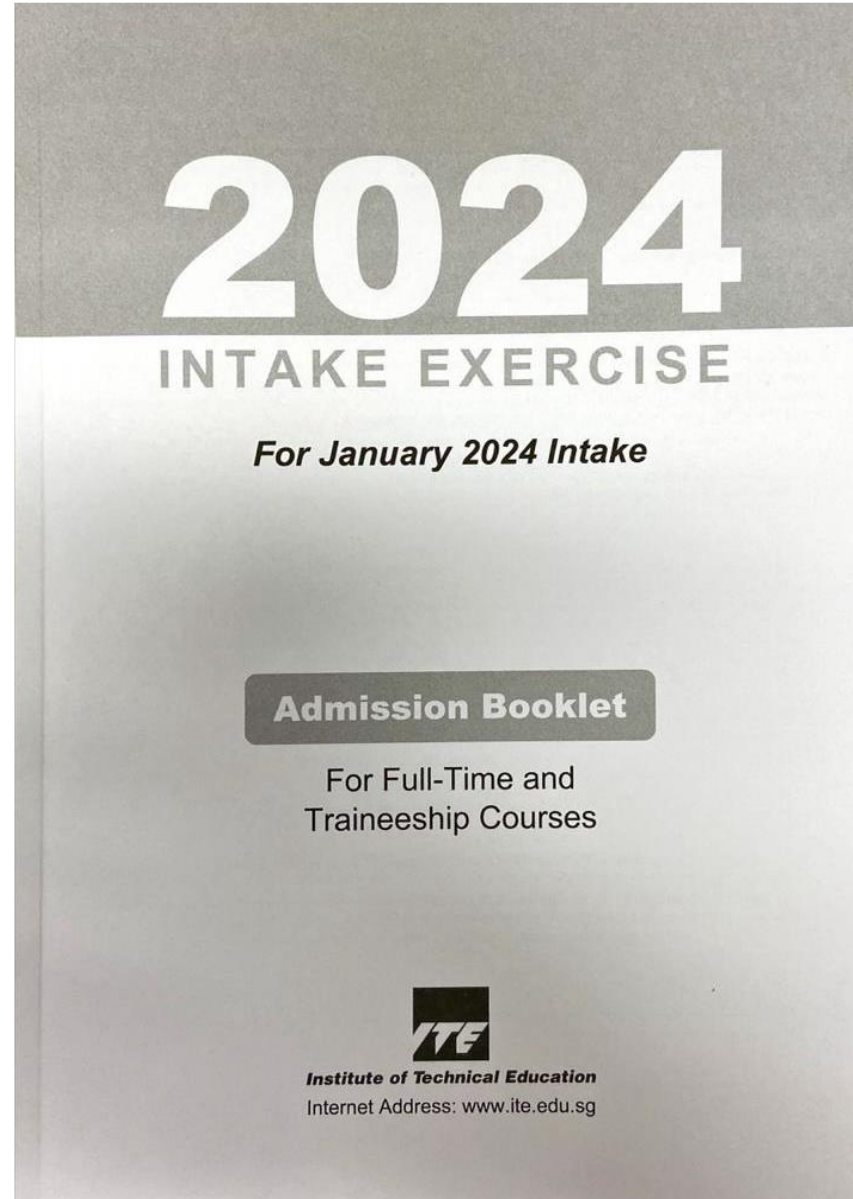
*Monday – Friday (Excluding Public Holidays):
10am – 12pm & 2pm – 5pm*



**The N-Level
examination is not
the destination.**

**It is part of your
education journey.**

2024 ITE Intake Exercise Admission Booklet



Admissions Exercises Application Timeline

(N-Level Results)

Dec

- JIE 'N'
- JIE 'E'
- DPP
- NFP

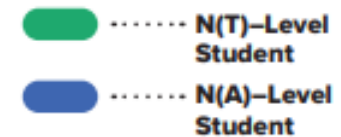
(Start of 2-year *NITEC* and 3-year *Higher Nitec*)

Jan

- PFP
- DPP
(2nd window of applications)

(Start of Polytechnic and 2-year *Higher Nitec* Term)

Apr



JUST-IN-TIME INFORMATION on JIE APPLICATION (Jan 2024 intake)

For N(A)* and N(T) School Leavers

*Applicable for N(A) students progressing to ITE

Briefing Slides for Students

A PRESENTATION BY
MINISTRY OF EDUCATION, SINGAPORE

Key Dates for Jan 2024 Intake Exercise (Full-time Nitec Courses)

| Key Activity | Period for 2-Year and 3-Year Nitec Courses, and 3-Year and 4-year Higher Nitec courses | Remarks |
|--|---|---|
| 1st Phase (Main Phase) | | |
| Application | 18 Dec 2023 (2.30pm) to 21 Dec 2023 (5pm) | Apply through the Internet at https://www.ite.edu.sg with NRIC / FIN and Date of Birth. You may also apply using SingPass. |
| Release of Results | 29 Dec 2023 at 9am | Check results at https://istudent.ite.edu.sg with web ID and password |
| Acceptance of Course Offer Period | 29 Dec 2023 to 3 Jan 2024 | Accept course offer at https://istudent.ite.edu.sg with web ID and password |
| 2nd Phase (Late Application/Appeal Phase) | | |
| Application | 29 Dec 2023 to 3 Jan 2024 | Apply through the Internet at https://istudent.ite.edu.sg with NRIC / FIN and Date of Birth. You may also apply using SingPass. |
| Release of Results | 10 Jan 2024 at 9am | Check results at https://istudent.ite.edu.sg with web ID and password |
| Acceptance of Course Offer Period | 10 Jan 2024 to 12 Jan 2024 | Accept course offer at https://istudent.ite.edu.sg with web ID and password |
| 3rd Phase (Final Top-up Phase) | | |
| Application | 1 st Top-up Phase Application - 10 Jan to 18 Jan 2024 2 nd Top-up Phase Application - 24 Jan to 7 Feb 2024 | Apply through the Internet at https://istudent.ite.edu.sg with NRIC / FIN and Date of Birth. You may also apply using SingPass. |
| Release of Results | 1 st Top-up Phase - 15 Jan to 24 Jan 2024 2 nd Top-up Phase - 24 Jan to 14 Feb 2024 | Check results at https://istudent.ite.edu.sg with web ID and password |
| Acceptance of Course Offer Period | 1 st Top-up Phase - 15 Jan to 24 Jan 2024 2 nd Top-up Phase - 24 Jan to 14 Feb 2024 | Accept course offer at https://istudent.ite.edu.sg with web ID and password |

Jan 2024 Intake Term Commencement Date: **8 Jan 2024**

JUST-IN-TIME INFORMATION ON JIE APPLICATION (JAN 2024 INTAKE)

Information For Students on Key Dates for Jan 2024 intake

1. All N(A)* /N(T) school leavers are encouraged to put in an application during the **1st Phase (Main Phase)** between **18 Dec 2023 (2.30pm) to 21 Dec 2023 (5pm)**. Application results for the 1st Phase will be released on **29 Dec 2023 at 9am**.
2. If you wish to appeal, please accept the course offered **before** applying in the **2nd Phase (Late Application/Appeal Phase)** between **29 Dec 2023 to 3 Jan 2024**. The application results for the 2nd Phase will be known on **10 Jan 2024 at 9am**.
3. Unsuccessful applicants can appeal under the **3rd Phase (Final Top-up Phase)** between **10 Jan to 18 Jan 2024 and 24 Jan to 7 Feb 2024** for courses with vacancies. The application results for the 3rd Phase will be known between **15 Jan to 24 Jan 2024** and **24 Jan to 14 Feb 2024**.

*N(A) students progressing to ITE

For further enquiries, N-Level school leavers can contact
ITE Hotline: 1800-2222-111

Key Pointers for Students on ITE's Joint Intake Exercise (JIE) for Admission to Nitec Courses

ALL N(T) students and N(A) students (who are not progressing to 5N(A) or repeating 4N(A)) are eligible for JIE.

Keen competition for Nitec and Higher Nitec courses, so use all 12 choices wisely!

Participation in Main Phase is key to secure a place in ITE!

If you are keen in the work & learn option, you may consider applying for the ITE Traineeship programme. Do apply in the Main Phase to avoid missing a place in ITE!

If you are unsuccessful in EAE, make sure you apply in Main Phase to avoid missing a place!

If you have received an additional letter, then you are eligible for the Enhanced Foundation Programme.

If you are eligible for EFP, make sure you apply for the 2-year Nitec and 3-year Higher Nitec first before applying for EFP!

The EFP helps to build the necessary literacy and numeracy foundations that will enable you to successfully complete your Nitec course!

If you are counter-offered a course, accept it first before appealing for another course you may be more interested in!

STEP-BY-STEP INFORMATION FOR JIE APPLICATION

Online Application for


2-Year Nitec and 3-Year
Higher Nitec Courses

3-Year Nitec/4-year Higher Nitec
Course with EFP
(for N(T) courses with 0, 1 pass)

1. Go to <https://www.ite.edu.sg>.

2. Click  icon.

3. Under JIE 'N', click  icon to link to the application website

Under JIE 'E', click  icon to link to the application website

4. At the application website:

- a) Enter NRIC / FIN and Date of Birth to start application. You may also apply using SingPass.
- b) Upon completion of application, applicants will receive their **web ID** and password.

STEP-BY-STEP INFORMATION FOR JIE APPLICATION

Checking of Posting Results/Accept Course Offer

2-Year Nitec and 3-Year
Higher Nitec Courses

3-Year Nitec/4-year Higher Nitec
Course with EFP
(for N(T) courses with 0, 1 pass)

1. Go to <https://istudent.ite.edu.sg>.
2. Enter **web ID** and password.
3. Click '**Self-Service**' followed by '**Student Admission**' followed by '**View Application Results**' to view the application results and to accept course offer.

The above steps applies to all phases (refer to Slide 9 for dates).
For more details, please refer to ITE Admission Booklet.

RESOURCES FOR STUDENTS

Additional Information For Students


Should you require further advice or assistance in your applications or future plans, please contact your teachers and ECG Counsellor.

For further inquiries, you may refer to the following hotlines and links for more information and advice on further education:

| Institute of Technical Education (ITE) | |
|---|---|
| ITE Hotline (for ITE admissions and courses) | 1800 2222 111 training@ite.edu.sg |
| Education and Career Guidance (ECG) | |
| ECG Centre @ MOE | <u>6831 1420</u> MOE ECG@moe.gov.sg e-Appointment: https://go.gov.sg/moe-ecg-centre |

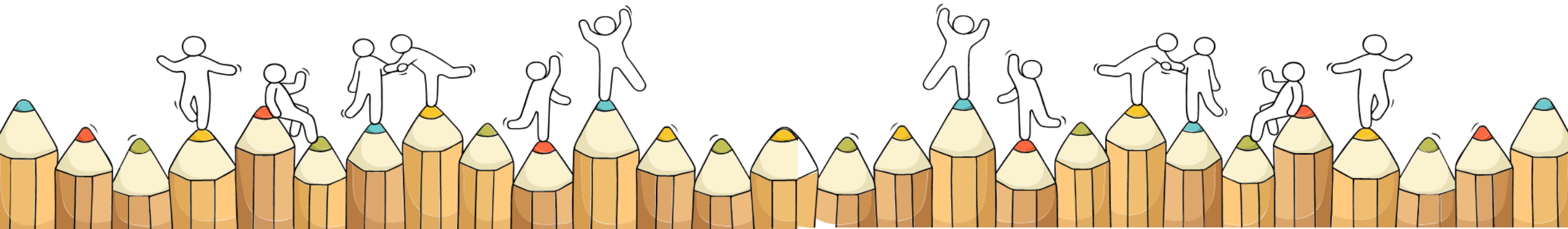
Additional Information For Students

The information listed in the table below will help you to make an informed decision on which choice of courses you could consider applying at ITE.

| S/N | Information | Attachment/Link |
|-----|---|---|
| 1 | ITE Factsheet 2023 |  JIEN2023 Factsheet |
| 2 | ITE Course Booklet 2024 | https://for.edu.sg/ite-course-booklet-2024 |
| 3 | ITE Traineeship Courses | https://www.ite.edu.sg/courses/traineeship-courses . |
| 4 | Information on Progression Opportunities (From <i>Nitec</i> Courses to <i>Higher Nitec</i> and Technical Diploma Courses) | https://www.ite.edu.sg/admissions/full-time-courses/nitec/progression-opportunities |
| 5 | Information on Graduate Employment Survey | https://www.ite.edu.sg/admissions/graduate-employment-survey |

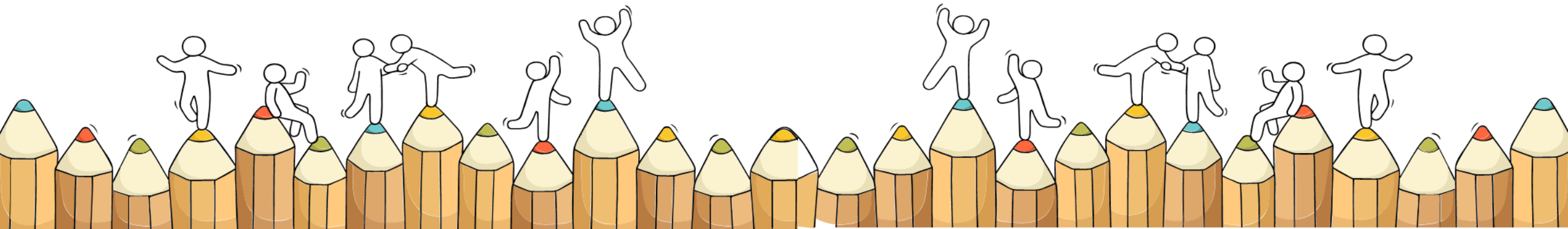
OPTIONS FOR SEC 4N(A) STUDENTS

(DPP/PFP/ Sec 5/ Private Education)



OPTIONS FOR SEC 4N(A) STUDENTS

DPP



DIRECT-ENTRY-SCHEME TO POLYTECHNIC PROGRAMME (DPP)

5 Things You Need to Know

1. What is the DPP?

- Prepares Sec 4N(A) students for progression into selected polytechnic diploma courses via a 2-year *Higher Nitec* programme at ITE, and a 10-week DPP preparatory course
 - Serves as an alternative to Sec 5
- DPP students who meet the minimum qualifying GPA score are guaranteed a place in a polytechnic diploma course mapped to the *Higher Nitec* course. (Refer to <https://www.ite.edu.sg/admissions/full-time-courses/higher-nitec-dpp> for course mapping.)
- About 1,200 places offered across 18 *Higher Nitec* courses

2. Am I eligible for DPP?

- Sec 4N(A) student who has sat for GCE N-Level exams in 2023
- Obtained ELMAB3 aggregate of 19 points or less (before deduction of CCA bonus points)
- Meet course-specific entry requirements
- If you can check all 3 boxes above, you're eligible!**
(Note: Being eligible to apply *does not guarantee* you a place in a DPP *Higher Nitec* course.)

If you have offered GCE O-Level examination subjects in 2023, you may refer to this table for the equivalent grade to compute your ELMAB3 aggregate:

| GCE O-Level Grade | Converted Grade |
|-------------------|-----------------|
| A1-B3 | 1 |
| B4-C6 | 2 |
| D7 | 3 |
| E8 | 4 |

3. How do I apply?

- Upon release of the GCE N-Level results, all DPP-eligible students may apply for DPP *Higher Nitec* courses via the ITE website (<https://www.ite.edu.sg>).
- You may select up to 12 course choices.
- Remember to provide updated contact details in your application so that ITE can contact you if necessary.

4. How will I be informed of the outcome?

- You should check your DPP posting results online on the morning of the release of the DPP posting results.
- You will then have to indicate if you wish to accept/reject/appeal the offer.
- Your offer will be void if you do not accept the offer by the stipulated date. You will be required to continue with your classes in Sec 5 or with your *Nitec* course if your application via JIE 'N' is successful

5. What happens next?

Upon accepting your DPP offer, you will attend a 10-week DPP preparatory programme starting from Jan 2024.

| | | | | | | | | | |
|--------------------------------|-----------------|------------------------|--------------------------------|----------------------|--------------------------------|---|------------------------|--------------------------------|--------------------------------|
| Release of GCE N-Level Results | DPP Application | Application Processing | Release of DPP Posting Results | Accept/Reject/Appeal | Release of GCE O-Level Results | DPP Application for newly-eligible students | Application Processing | Release of DPP Posting Results | End of DPP Admissions Exercise |
|--------------------------------|-----------------|------------------------|--------------------------------|----------------------|--------------------------------|---|------------------------|--------------------------------|--------------------------------|

December 2023

January 2024

Early February
2024

2. Am I eligible for DPP?

- Sec 4N(A) student who has sat for GCE N-Level exams in 2023
- Obtained ELMAB3 aggregate of 19 points or less (before deduction of CCA bonus points)
- Meet course-specific entry requirements

 **If you can check all 3 boxes above, you're eligible!**

(Note: Being eligible to apply does not guarantee you a place in a DPP Higher Nitec course.)

If you have offered GCE O-Level examination subjects in 2023, you may refer to this table for the equivalent grade to compute your ELMAB3 aggregate:

| <i>GCE O-Level Grade</i> | <i>Converted Grade</i> |
|--------------------------|------------------------|
| <i>A1-B3</i> | <i>1</i> |
| <i>B4-C6</i> | <i>2</i> |
| <i>D7</i> | <i>3</i> |
| <i>E8</i> | <i>4</i> |

3. How do I apply?

- Upon release of the GCE N-Level results, all DPP-eligible students may apply for DPP *Higher Nitec* courses via the ITE website (<https://www.ite.edu.sg>).
- You may select up to 12 course choices.
- Remember to provide updated contact details in your application so that ITE can contact you if necessary.

Refer to pages 44 to 68 of the Admission Booklet
for more information

DPP Brochure



<https://for.edu.sg/dpp-brochure>

Can I Get a Guaranteed* Place in the Polytechnics?

To get admission to a related Diploma course through the DPP, you will need to meet the following criteria:



2-Year DPP *Higher Nitec* Courses

Progress to 1st Year Relevant Polytechnic Diploma Course*

Progress to 2nd Year Relevant Polytechnic Diploma Course*

Applied Sciences[#]

ITE GPA \geq 2.5 points (excluding CCA bonus points[^])

N.A.

Engineering and Info-Communications Technology[#]

ITE GPA \geq 2.5 points (excluding CCA bonus points[^])

ITE GPA \geq 3.5 points (excluding CCA bonus points[^])

Business & Services

ITE GPA \geq 3.0 points (excluding CCA bonus points[^])

N.A.

[#] For *Higher Nitec* courses in Applied Sciences, Engineering and Info-Communications Technology, in addition to the qualifying Grade Point Average (GPA) scores, students are required to take up and pass a Mathematics elective at ITE to be eligible for polytechnic courses under DPP. N(A) students with at least a grade C in GCE 'O' Level Mathematics will be exempted from this requirement.

[^] CCA grades will be used for computing students' net GPA at ITE for selection and posting to a polytechnic Diploma course.

^{*} DPP students who successfully complete *Higher Nitec* courses and attain the required minimum qualifying *Higher Nitec* GPA scores are guaranteed relevant 1st Year courses at polytechnics, which are mapped to their *Higher Nitec* courses. Guaranteed progression applies only to 1st Year of relevant courses. Admissions are based on merit and subject to vacancies in the courses.



How do I Apply for the DIRECT ENTRY SCHEME TO POLYTECHNIC PROGRAMME (DPP)?

You can apply via ITE's Joint Intake Exercise under JIE 'H' at www.ite.edu.sg after receiving your GCE 'N' level results.

Fees

| Category | Preparatory Course (10 Weeks) [^] | All <i>Higher Nitec</i> Courses (Per Term) ^{^*} |
|-------------------------------|--|--|
| Singapore Citizens | \$114 | \$313 |
| Singapore Permanent Residents | \$1,609 | \$3,926 |
| International Students | \$4,363.05 | \$10,331.24 |

^{*} Fees are charged based on 6-month term

[^] Fees listed may be subject to revision for Academic Year 2024

For more information, log on to www.ite.edu.sg. You can also contact us at 1800 2222 111 or training@ite.edu.sg.

© Institute of Technical Education, Singapore (2024).



Institute of Technical Education



DIRECT ENTRY SCHEME TO POLYTECHNIC PROGRAMME (DPP)

Why choose a *Higher Nitec* Course under DPP?

Eligible Secondary 4N(A) students taking the GCE 'N' level examinations can enjoy **direct progression** from a 2-Year *Higher Nitec* course to a related Diploma course in the polytechnics!



Direct progression from a *Higher Nitec* course to a related Diploma course in the polytechnics*



Adopt ITE's hands-on learning approach with 60% practical training and 40% theory



Skip the uncertainty of taking the GCE 'O' Levels



Master a strong foundation in technical education and have an edge over your peers at the polytechnics

*subject to meeting qualifying criteria



2-Year *Higher Nitec* Courses (under DPP)

Applied Sciences

- Bio-Chemical Technology

Engineering

- Civil & Structural Engineering Design
- Electrical Engineering
- Electronics Engineering
- Mechanical Engineering
- Mechatronics Engineering

Info-Communications Technology

- Business Information Systems
- Cyber & Network Security
- Immersive Applications & Game
- IT Applications Development
- IT Systems & Networks

Business & Services

- Accounting
- Business Administration
- Event Management
- Hospitality Operations
- Logistics & Supply Chain Management
- Service Management
- Tourism

Minimum Entry Requirements

You must obtain a total of 19 points or less for English Language, Mathematics and 3 other subjects (ELMAB3), excluding CCA bonus points, in the GCE 'N(A)' Level examinations.

For the ELMAB3 aggregate score, you must get:

- 1 - 4 in English Language
- 1 - 4 in Mathematics
- 1 - 5 in 3 other subjects

You must obtain a total of 19 points or less for English Language, Mathematics and 3 other subjects (ELMAB3), excluding CCA bonus points, in the GCE 'N(A)' Level examinations.

For the ELMAB3 aggregate score, you must get:

- 1 - 3 in English Language
- 1 - 4 in Mathematics
- 1 - 5 in 3 other subjects



All successful applicants will go through a 10-week preparatory course starting in January

The preparatory course consists of:

- Oral and Written Communication Skills
- Science, Mathematics or Business Skills

Upon completion of this course, you will join ITE's April intake for the 2-Year *Higher Nitec* course you are enrolled in.

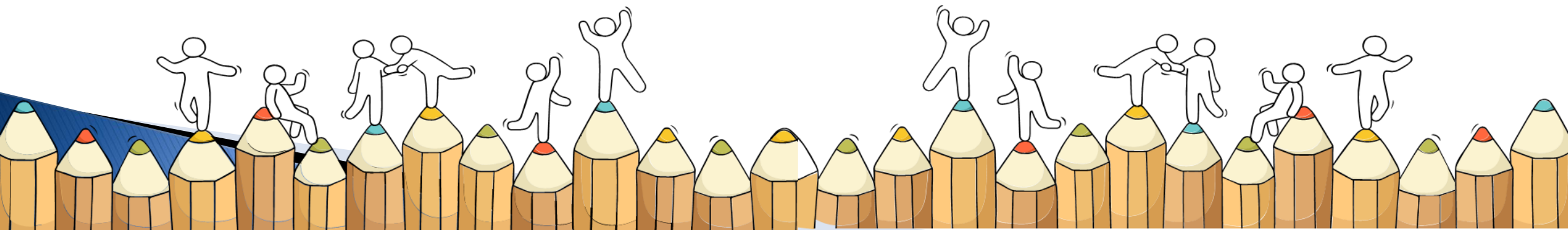


"DPP programme provides me with an outstanding environment that allows me to level up my foundational skills through the bridging programme."

WONG YIXIN
Higher Nitec in
Cyber and Network Security
ITE College Central

OPTIONS FOR SEC 4N(A) STUDENTS

PFP



POLYTECHNIC FOUNDATION PROGRAMME (PFP)

Essential Things You Need to Know

1. What is the PFP?

- A foundation year at the polytechnics that:
 - Prepares well-performing Sec 4N(A) students for entry into relevant polytechnic diploma courses
 - Serves as an alternative to Sec 5
- Conducted over two academic semesters at the polytechnics
- Students must pass all PFP modules in order to progress to their respective, pre-selected diploma courses.

2. Am I Eligible for PFP 2024?

- You are eligible for the PFP if you:
- Sat for GCE N-Level exams as a school candidate in 2023
 - Have obtained an ELMAB3 aggregate of 12 points or less (before deduction of CCA bonus points)
 - Met subject-specific entry requirements as listed on the PFP portal

If you can check all 3 boxes above, you're eligible!
 (Note: Eligibility does not guarantee you a place in a PFP course)

If you had offered GCE O-Level examination subjects in 2023, you may refer to this table for the equivalent grade to compute your ELMAB3 aggregate:

| GCE 'O' Level Grade | Converted Grade |
|---------------------|-----------------|
| A1-B3 | 1 |
| B4-C6 | 2 |
| D7 | 3 |
| E8 | 4 |

3. How do I Apply?

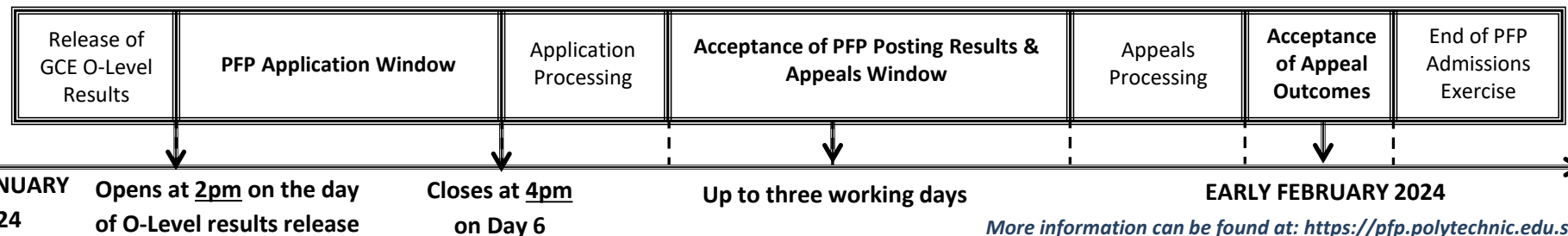
- Upon release of the GCE O-Level results, all PFP-eligible students will receive Form P containing a PFP PIN that allows them to apply for the PFP at this [link](#).
- You may select up to five course choices.
- Remember to provide updated contact details in your application to allow the polytechnics to contact you if necessary.
 (Note: You should continue to attend Sec 5 from 2 January 2024 while applying for PFP.)

4. How Will I be Informed of the Outcome?

- You should log in to the PFP portal to check your application outcomes on the day of PFP posting results release.
- You will then have to indicate if you wish to accept/reject/appeal the offer.
- If you do not select any option, your offer will become invalid and you will be required to continue with your classes in Sec 5/DPP.
 (Note: If your appeal is successful, your original offer will be voided, regardless of whether you accept the new PFP offer.)

5. What Happens Next?


- If you accept your offer, you will receive an enrolment package from the polytechnics in February/March 2024.
- The PFP year will start in April 2024.



2. Am I Eligible for PFP 2024?

You are eligible for the PFP if you:

- Sat for GCE N-Level exams as a school candidate in 2023
- Have obtained an ELMAB3 aggregate of 12 points or less (before deduction of CCA bonus points)
- Met subject-specific entry requirements as listed on the PFP portal

 **If you can check all 3 boxes above, you're eligible!**
(Note: Eligibility does not guarantee you a place in a PFP course)

If you had offered GCE O-Level examination subjects in 2023, you may refer to this table for the equivalent grade to compute your ELMAB3 aggregate:

| GCE 'O' Level Grade | Converted Grade |
|---------------------|-----------------|
| A1-B3 | 1 |
| B4-C6 | 2 |
| D7 | 3 |
| E8 | 4 |

3. How do I Apply?

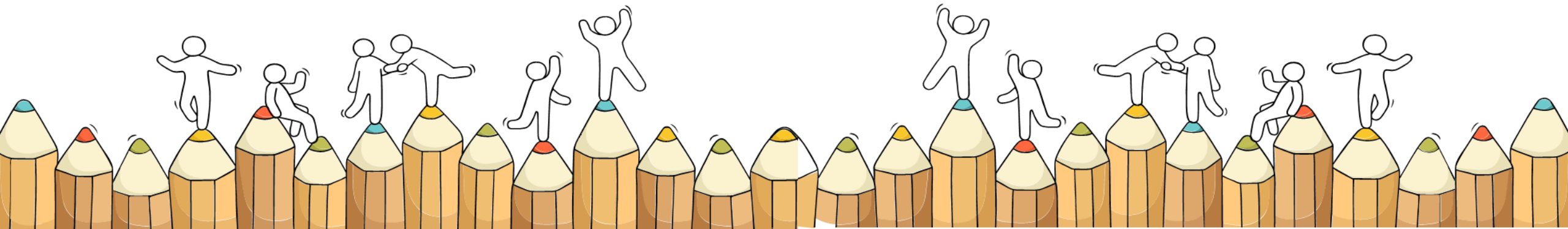
- Upon release of the GCE O-Level results, all PFP-eligible students will receive Form P containing a PFP PIN that allows them to apply for the PFP at this [link](#).
- You may select up to five course choices.
- Remember to provide updated contact details in your application to allow the polytechnics to contact you if necessary.

(Note: You should continue to attend Sec 5 from 2 January 2024 while applying for PFP.)

**PFP students:
No need to
purchase Sec 5
textbooks**

OPTIONS FOR SEC 4N(A) STUDENTS

Sec 5



**(Optional) Briefing for students who
intend to pursue GCE O-Levels in 2024
(for 4NA students)**

Date: 19 December 2023 (Tuesday)

Time: 0830 – 1000

Venue: Theatrette

| Time | Programme |
|-------------|---|
| 0830 – 0915 | Bridging for 4NA (2023) to 5NA (2024): Teachers will provide important information on the expectations of the GCE O-Level syllabus. |
| 0915 – 1030 | Making choices after the N-levels Question and Answer (Optional) Students with no questions can choose to leave |

First Day of School (2024)

Secondary 5 and students applying for PFP

- 2 January 2024 (Tue) at 7.25am
- All school rules apply

***Navigating
Futures, Igniting
Paths –
Professional
Guidance Day 2024
(2 Jan 2024)***

Objectives

The sharing by various professionals aims to:

- enable you to understand the significance of **lifelong learning**;
- allow you to recognise the importance of **active contribution** to society;
- provide you with insights into various **professions and realities of the workplace**; and
- help you make more informed decisions when **planning their education**.

What you need to do :

Fill in the option form by **20 Dec 2023** to indicate the 2 sharing sessions you are keen to attend.

Otherwise, your breakout sessions will be assigned.



REMINDER

Students who are applying for private education or ITE via alternative channels (appeals etc) are to keep your FTs updated on the status of your application and send us the confirmation letters as soon as possible.

This is important as it will affect the printing of your School Graduation certificates.



**The N-Level
examination is not
the destination.**

**It is part of your
education journey.**

Thank you





Ministry of Education
SINGAPORE